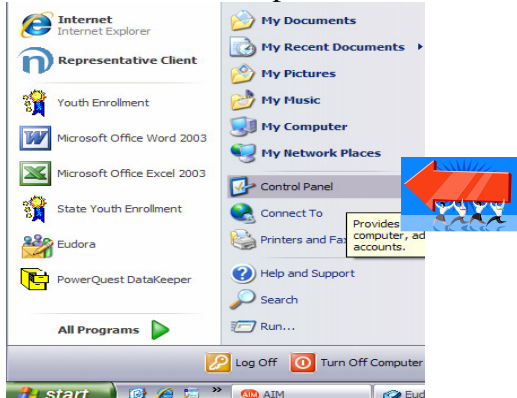


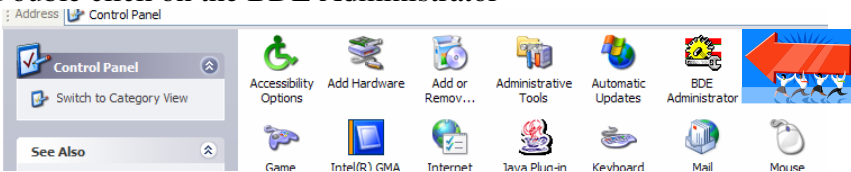
What to do if you get a BDE error message when I try to install Youth Enrollment Version 2.6 (update or full install), or I can't get the program to open after I install the new version?

The BDE administrator is used by programs such as Excell files, Access, and Corel programs. Sometimes while loading Youth Enrollment Ver. 2.6 the BDE Administrator has a conflict with some of the Corel program files which cause WinYouth not to be saved in the BDE Administrator. In this case you must reconfigure WinYouth in the BDE program. Don't worry this is a fairly easy process.

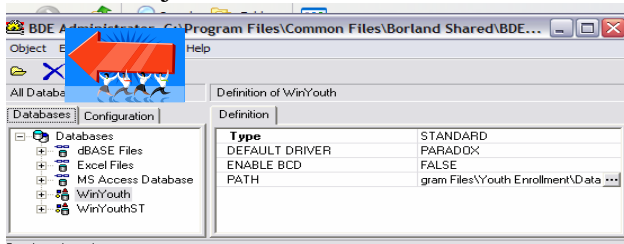
The following process will allow you to add WinYouth to the BED Administrator.
Go to start / Control panel



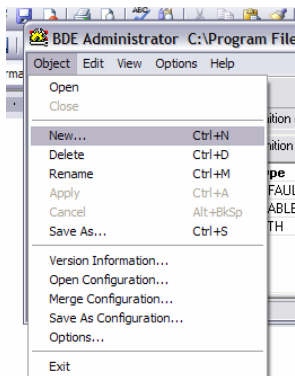
Double click on the BDE Administrator



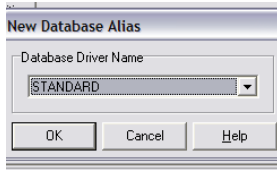
Click on Object



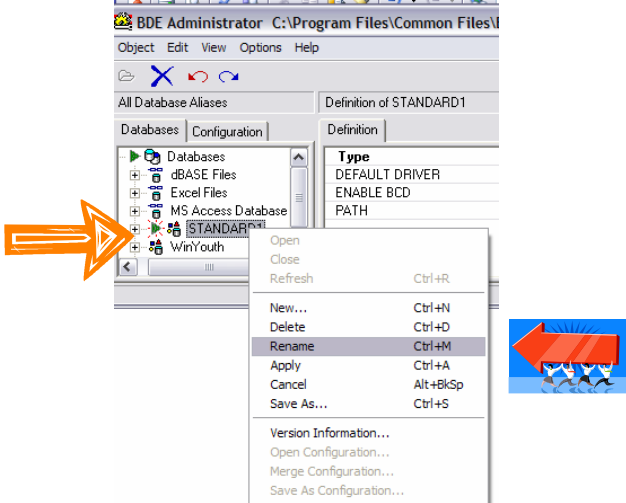
Click on New



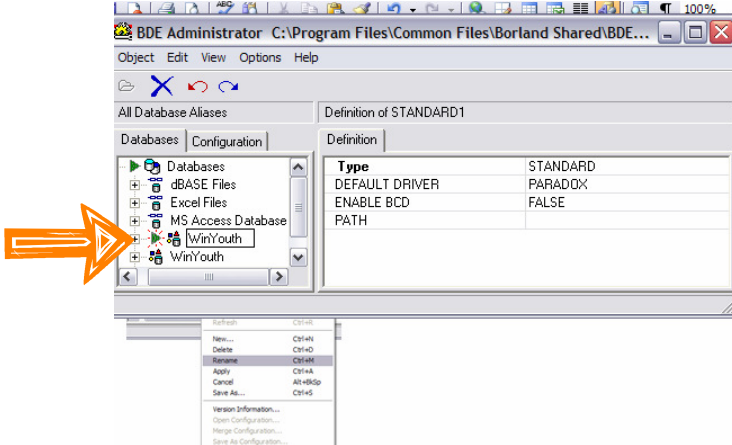
Click OK



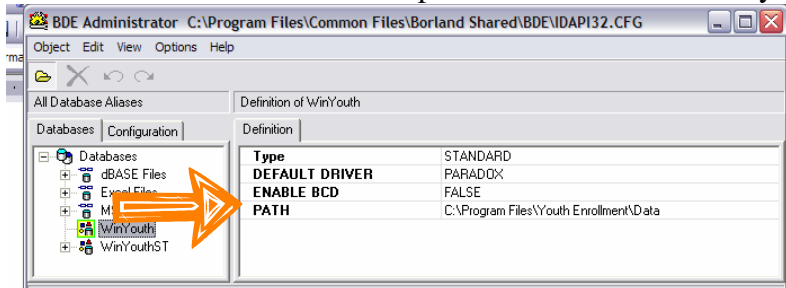
While the mouse is still on the word Standard / right mouse click on Rename

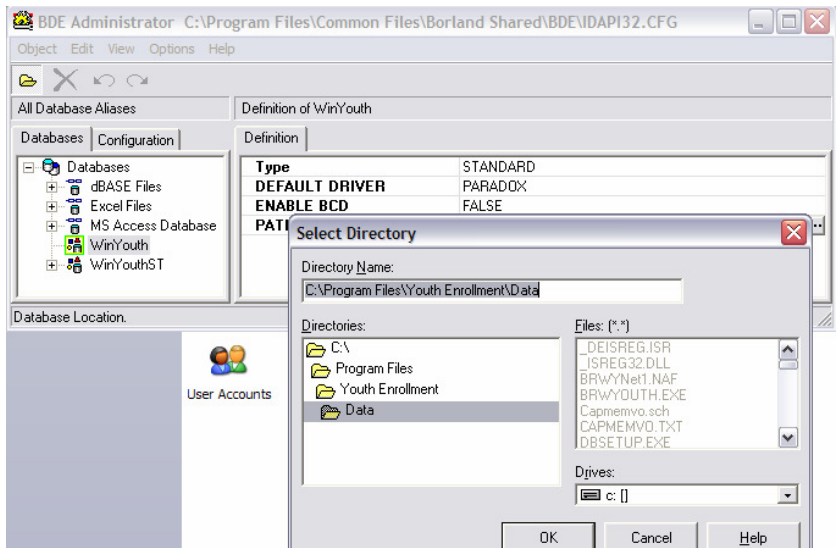


Under the Databases tab / Rename the word Standard to WinYouth

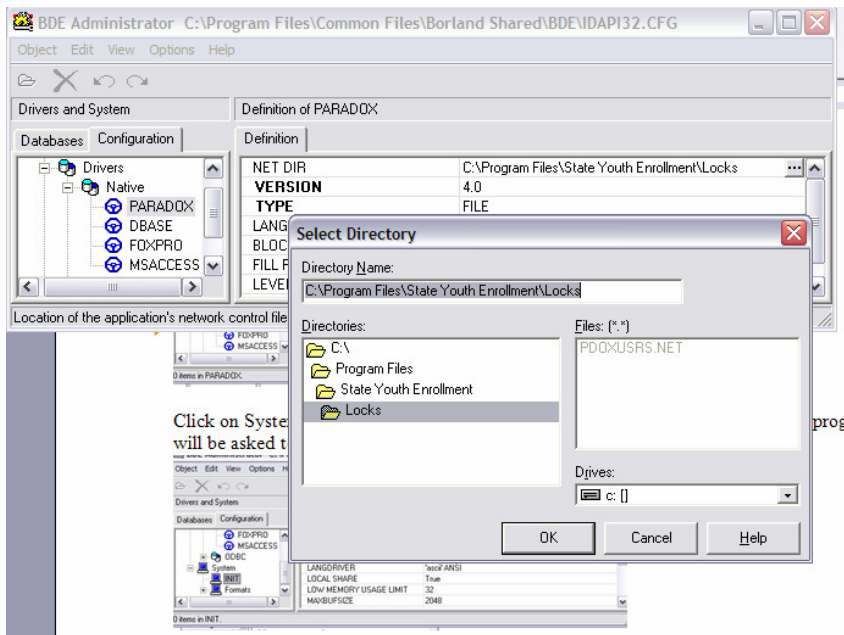
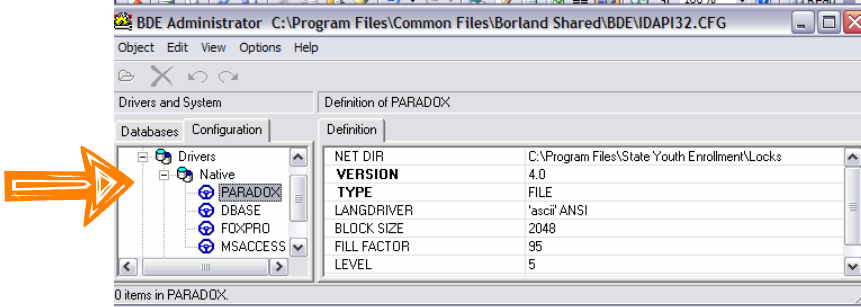


Click on the Path and direct the path to the location where your data is located

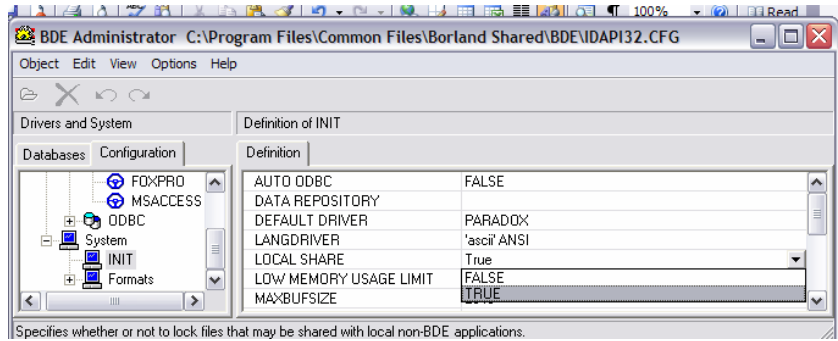
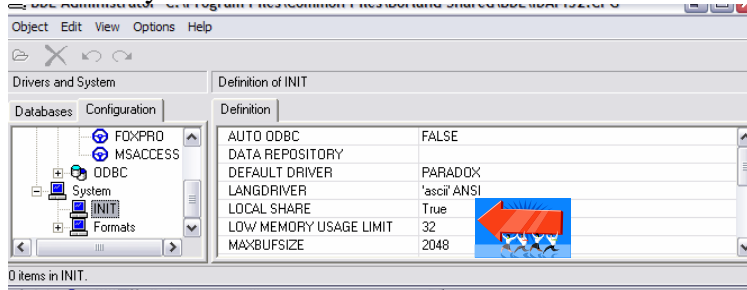




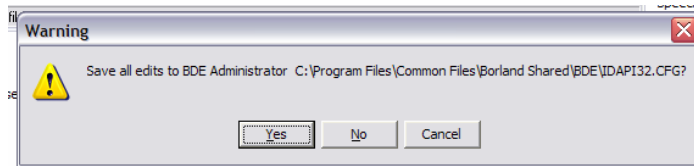
Click on the Configuration tab / Drivers / Native / Paradox
 Click on the Net Dir and direct the file to the location of the locks file



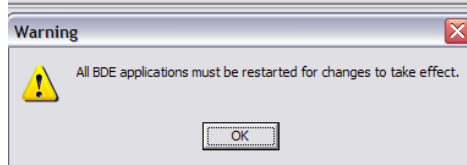
Click on System / INIT / the local share should be True



When you exit from this program you will be asked to save the settings /click on Yes



Click on OK / Open Youth Enrollment The Youth Enrollment should now open correctly. If you have problems feel free to give me a call to send an email.



Created on Jan. 9, 2007