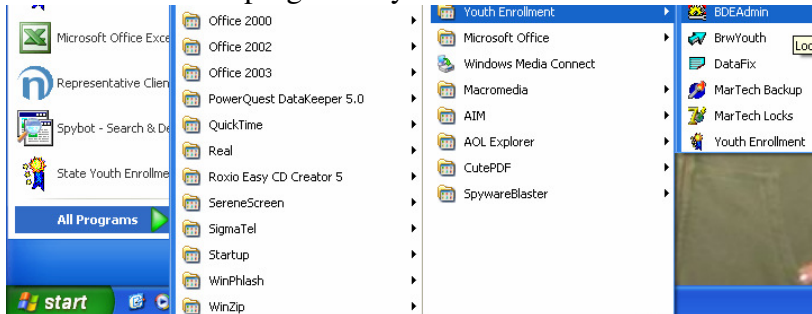


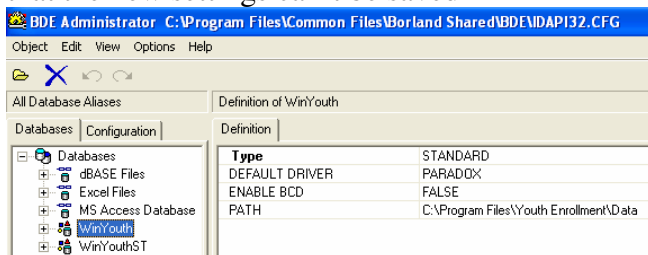
Youth Enrollment Help Sheet

How to change the data path when Youth Enrollment won't open

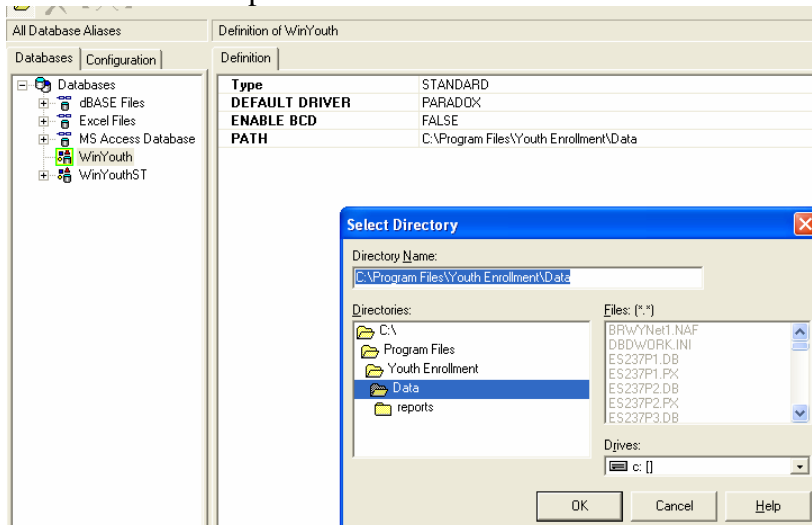
Click on start / all programs / youth enrollment / BDE administrator



Click on Win youth; make sure you only click on it once, otherwise you will get an error message that the new settings can't be saved



Click on the path / select the directory that has the data / click on the data / click ok / if you have saved the changes you will get a message that indicates that the changes were saved / you now should be able to open Youth Enrollment



Prepared By:
Jim Elder
Extension Educator
Research, and Technical Support Instructor
Ohio State University Extension